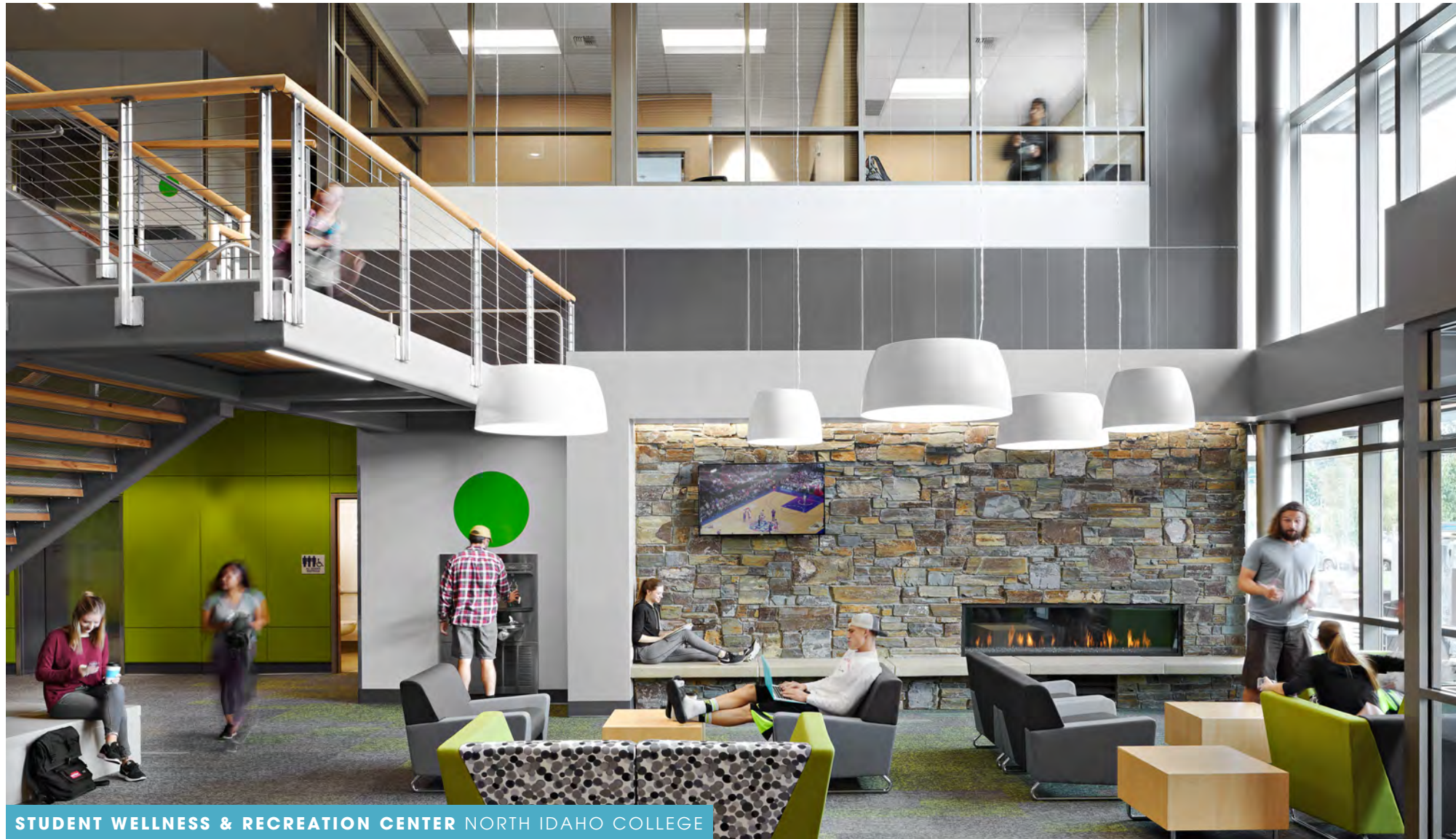


ALSC
ARCHITECTS



STUDENT WELLNESS & RECREATION CENTER NORTH IDAHO COLLEGE

Sports & Recreation Experience

ALSC's expertise in sports and recreation facility planning and design benefits clients as we continue to enhance our understanding of current building, construction and environmental issues and trends. This experience has been successfully applied to a variety of projects including stadiums, arenas, aquatic centers, fitness centers and training facilities. The following is select list of ALSC's sports and recreation project experience; expanded descriptions and photos are included on the following pages for several of these facilities.

To learn more about a specific project, contact Indy Dehal, our studio leader for this project type.

Indy Dehal, PRINCIPAL
idehal@alscarchitects.com
509.838.8568



Volkar Center for Athletic Achievement

GONZAGA UNIVERSITY | SPOKANE, WA



The 51,240 square foot Volkar Center for Athletic Achievement was designed to help student-athletes succeed in competition, in the classroom and in the community. The facility houses student athlete support services, weight room, nutrition center, basketball practice court, Athletics Hall of Fame, offices and meeting areas. Combined with spaces in the adjacent Charlotte Y. Martin Centre and McCarthy Athletic Center, the building provides Gonzaga's student athletes with among the finest facilities and support services in the nation.

ALSC has a long history of providing architectural services for Gonzaga University's athletic facilities. Additional include the original John F. Kennedy Pavilion, Charlotte Y. Martin Centre, Rudolph Fitness Center, Patterson Baseball Complex and McCarthy Athletic Center.



“

This place is unbelievable, this is absolutely the nicest venue to play college basketball in the United States right now.

MARK FEW
Men's Basketball Coach
Gonzaga University



McCarthy Athletic Center

GONZAGA UNIVERSITY | SPOKANE, WA



The McCarthy Athletic Center is the home for the Gonzaga University Bulldogs basketball games. The 6,000 seat Arena was completed within a 20-month period using a design-build process. The design and construction responded to tight budget parameters and resulted in a spectacular, state-of-the-art athletic center.

To replicate the standing-room-only feeling of the former "Kennel", McCarthy was designed with steep seating risers, making every seat feel closer to the basketball floor than with normally tiered seating. A comprehensive media infrastructure accommodates broadcasts from the facility.





Rudolf Fitness Center

GONZAGA UNIVERSITY | SPOKANE, WA



This expansion of Gonzaga University's athletic and fitness facilities (Charlotte Y. Martin Centre) included construction of a two-story, 12,000 square foot addition between the fieldhouse and pool buildings. The addition connects the two structures and includes a prominent entrance to serve both.

The addition houses a well-diversified fitness center where students and faculty members can take advantage of activities including swimming, running, weight training, aerobics, racquetball, basketball and volleyball. Glass partitions are positioned throughout the facility to accentuate spaciousness and enhance the natural lighting.

Within the aquatic area, a formal separation was created between the locker rooms and the pool. This allows patrons using other areas of the fitness center to access the locker rooms without having to enter through the aquatic center.



Luger Field Improvements

WASHINGTON STATE UNIVERSITY | PULLMAN, WA



Design Principles

- > Weaving Soccer into campus
- > Heighten arrival and game-time experience
- > Improve pedestrian pathways day-to-day

With increasing attendance for the Gonzaga University soccer teams, expanded facilities will help bolster soccer's presence on the campus and to the greater Spokane area. 1,600 seats, expanded concessions, restrooms, Hall of Fame and a new entry sequence help create a home for GU Soccer to continue greatness in the West Coast Conference.





Patterson Baseball Complex

GONZAGA UNIVERSITY | SPOKANE, WA

Patterson Baseball Complex and Washington Trust Field is the home of Gonzaga University's baseball program. Spectators are greeted at an entry plaza which is axially aligned with the entry to the nearby McCarthy Athletic Center, anchoring the athletic complex at the campus interface with the Spokane community.

A variety of seating options are offered including open club spaces, roof covered theater style seating and family friendly grass berm areas. A large ground level concourse connects seating areas to spectator services including concessions and restrooms. The open public space lends itself to pre- and post-game functions and is a multipurpose venue for the greater campus community.

A carefully detailed mix of precast concrete and masonry makes the facility a good neighbor for the adjacent School of Law, reinforcing an architectural theme that defines Gonzaga University Athletics.



Event Center

WHITWORTH UNIVERSITY | SPOKANE, WA



ALSC provided pre-design services for this proposed new Event Center for Whitworth University. Our involvement included the following:

- > Initial visioning sessions and fundamental programming discussions to establish a conceptual building program and budget target.
- > Established guiding principles and goals for the facility design.
- > Studied other similar facilities including a tour of McCarthy Athletic Center at Gonzaga University.
- > Confirmed facility users, uses and facility attributes needed to support those uses.
- > Reviewed site and Master Plan influences.
- > Developed building configuration options including site plans, organizational diagrams, and conceptual building sections/massing.
- > Developed promotional materials for selected option to support fundraising efforts.



Pine Bowl Improvements

WHITWORTH UNIVERSITY | SPOKANE, WA



Whitworth University recently unveiled a new Field Turf Revolution 360 artificial surface at the Pine Bowl. The new turf features Whitworth's logo at midfield and reads "Pirates" in both black and crimson end zones.

In addition to the turf replacement project, design is underway on improvements to the Pine Bowl Press Box. The scope of work involves removal of the existing press box and support buildings. A new 10,000 square foot press box will be geared toward enhancing the school's recruiting abilities and boosting fan experience. It is slated to be two stories and include luxury suits, merchandising, concessions, lounges and media rooms. A new entry plaza with associated site improvements are included.





Athletics Leadership Center

WHITWORTH UNIVERSITY | SPOKANE, WA



Design Principles

- > Path-Portal-Place creation
- > Unique Whitworth Dynamic
- > Community of Sports
- > Connectivity with athletes
- > Flexibility for the future

During the last decade, one team has won the All Sports Trophy for the Northwest Conference - the Whitworth Pirates. To finally create one home for 16 sports programs, this building connects coaches and players in a central gathering space called "the community of sports".



Aquatics Center Renovation

WHITWORTH UNIVERSITY | SPOKANE, WA

The Whitworth Aquatic Center suffered from a lack of daylighting into the building and the unwelcome smell of chlorine. This renovation was designed to address those concerns by improving the mechanical system and installing floor-to-ceiling windows to allow natural light into the building. Mechanical system upgrades include a new pool evacuator system and HVAC improvements that will help move cooler air throughout the facility.

In addition, a new bulkhead was installed, the pool deck was resurfaced and the entire building was re-painted.



Student Wellness & Recreation Center

NORTH IDAHO COLLEGE | COEUR D'ALENE, ID



Student input, as well as the involvement of faculty and staff, was instrumental in "giving life and form" to the new North Idaho College Student Wellness and Recreation Center. The students felt it was important that the facility be designed to reflect the values of the College as well as the character of the surrounding campus. The use of masonry with accents of wood, stone, metal and glass provides a timeless character while acknowledging current and future campus vernacular.

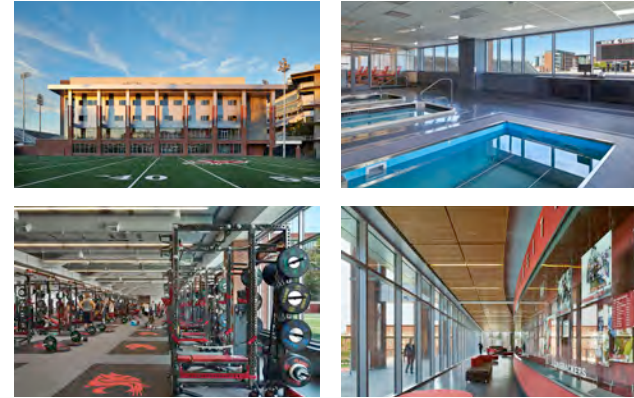
The new 30,225 square foot facility is organized around the main lobby, giving high visibility to each function. The reception desk is located just inside the entry; configured to provide optimum visibility and serve as a controlled access point into the building. The facility includes a climbing wall, fitness classrooms, weight and cardio areas, gymnasium, multi-purpose room, elevated track, locker rooms and an administration suite. The lobby and second level lounge are open and spacious, with areas for stretching and informal gathering.





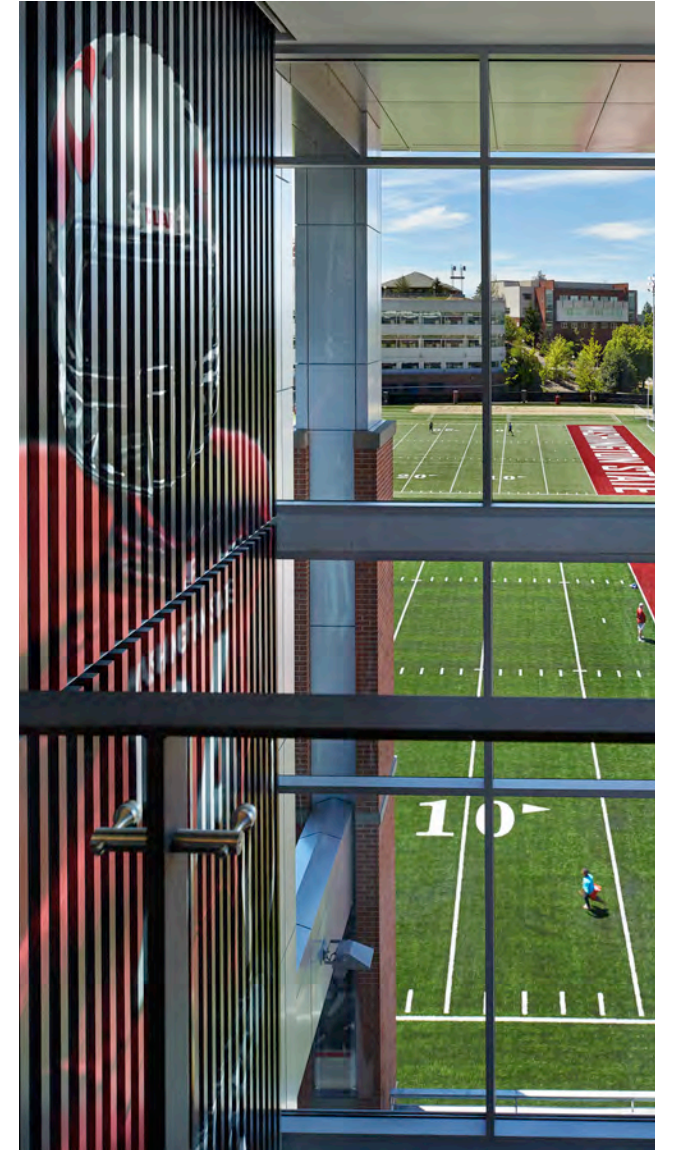
Cougar Football Complex

WASHINGTON STATE UNIVERSITY | PULLMAN, WA



The Cougar Football Complex provides a new home and identity for Cougar Football at Washington State University. The state-of-the-art facility pays tribute to legendary athletes from the past, supports athletes striving for greatness today and will attract star athletes of the future. The desire to preserve campus circulation patterns and sight lines from adjacent seating in Martin Stadium led to a 5-story layout. The 88,880 square foot building is arranged as follows:

- > Locker rooms are located on the first floor, along with equipment storage, laundry, interview and study spaces.
- > The second floor includes an 11,000 square foot weight room, nutrition bar and coaches' offices.
- > The third floor connects to Compton Union Building through an elevated walkway. It includes The Cougar Football Hall of Fame, trophy room and memorabilia center.
- > The fourth floor features a dining hall, meeting rooms and a 160-seat auditorium.
- > On the top level are conference rooms and offices for coaches and staff.





Martin Stadium Expansion

WASHINGTON STATE UNIVERSITY | PULLMAN, WA



This project involved the expansion and renovation of the south side of Martin Stadium. The existing press box and suite seating were demolished and replaced with enhanced premium seating and a new press box facility. The press box includes space to accommodate media, television, radio and stadium operations.

The premium seating area includes more than 1,200 club seats, 42 loge boxes and 21 luxury suites as well as an exclusive 10,000 square foot Club Room with upscale food and beverage options.

AECOM served as consulting architect for the project.



Bailey-Brayton Baseball Field

WASHINGTON STATE UNIVERSITY | PULLMAN, WA



ALSC provided pre-design services for the proposed Bailey-Brayton Field Clubhouse Addition project. Our scope of work included interviews with stakeholders, preliminary programming and budgeting studies, building site option studies, conceptual site planning and initial conceptual building design for the proposed 15,000 square foot, 2-story facility.

The project is envisioned to include a new baseball Hall-of-Fame, locker rooms, umpire support spaces, and equipment storage on the ground floor. The main entrance is located immediately adjacent to the existing spectator entry. The potential also exists for a direct connection from the home team lockers to the 3rd base line dugout. The second floor will feature a large assembly/club space overlooking both the baseball field and the Hall of Fame below. Other second floor spaces include offices, kitchen, support spaces and the opportunity for future premium suites facing the field.





Football Stadium Improvements

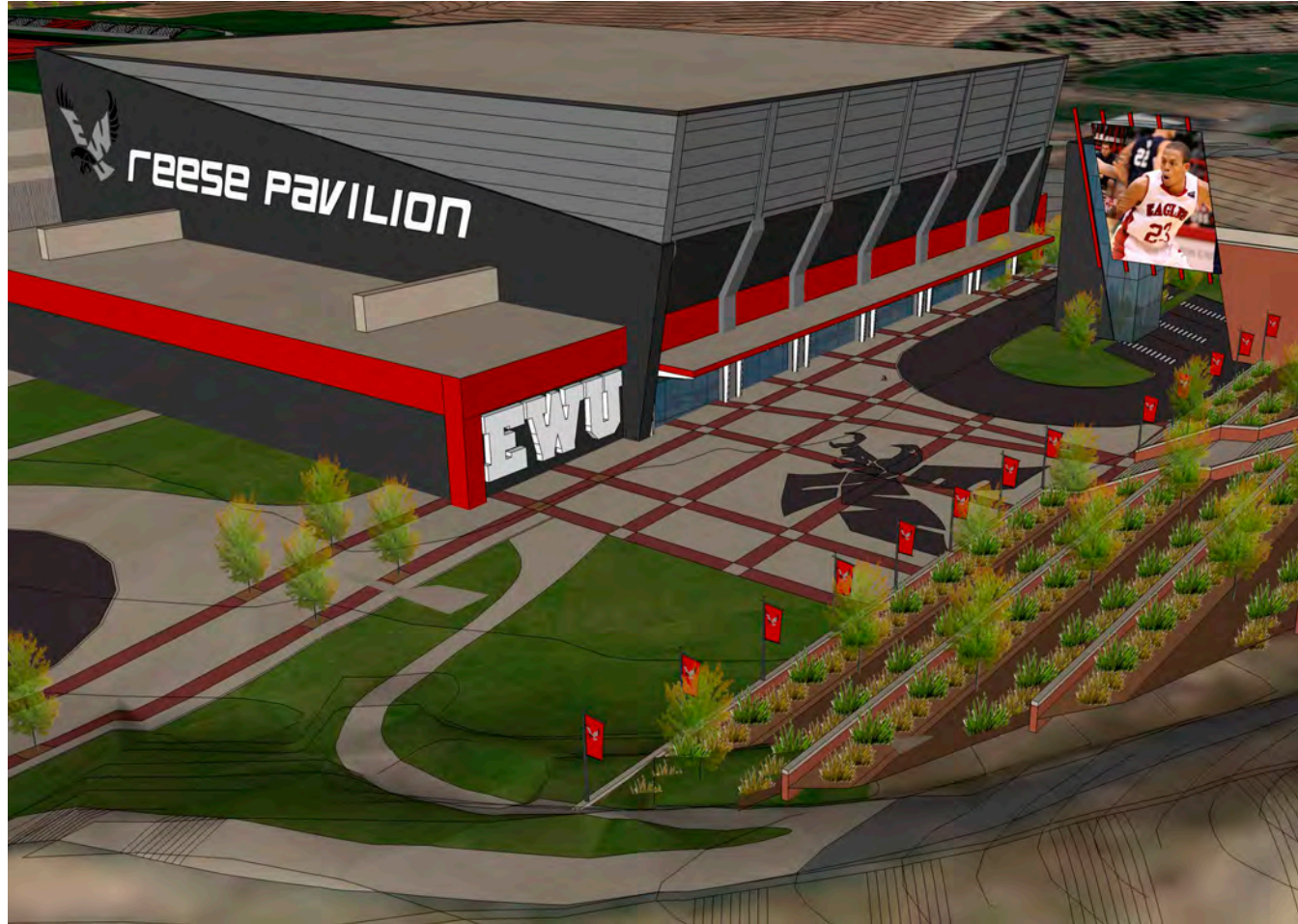
EASTERN WASHINGTON UNIVERSITY | CHENEY, WA



Design Principles

- > Be Spokane's team
- > Game day experience
- > Maximize the asset
- > Intimacy
- > 24/7/365 Campus use
- > Campus connectivity
- > Strong identity

To match the high level of the Eastern Washington Universities football program, the facilities are preparing to "advance the standard" in the Big Sky Conference. Many amenities are being designed in the renovation, creating a vibrant environment to showcase this national caliber team and to create places to see and be seen.



ALSC was retained by EWU to develop a concept study for improvements to the EWU Special Events Pavilion. This study focused on the following:

- > Update the building's exterior to enhance the University image and game day experience.
- > Incorporate a ticket booth on the north side of the building or along the pedestrian pathway leading to it.
- > Improvements to walkway lighting along the primary pedestrian ways leading to the building consistent with the recent exterior lighting improvements elsewhere on campus.
- > Improvements to the walkway connecting lot P-12 to the north entrance of the building with emphasis on ADA accessibility.
- > Increase the electrical power capacity of the existing service to the building.

Events Pavilion Concept Study

EASTERN WASHINGTON UNIVERSITY | CHENEY, WA

203 N. Washington, Ste. 400
Spokane, WA 99201
509.838.8568

alscarchitects.com

We bring our clients' **stories** to life.