





NORTH PINES MIDDLE SCHOOL CENTRAL VALLEY SCHOOL DISTRICT

K-12 Experience

ALSC approaches each school project from the user's perspective. The students using these buildings spend much of their formative years learning and growing within these walls. It is our responsibility to create teaching environments that enhance and celebrate this transformation for generations to come.

To learn more about a specific project, contact Ken Murphy, our studio leader for this project type.

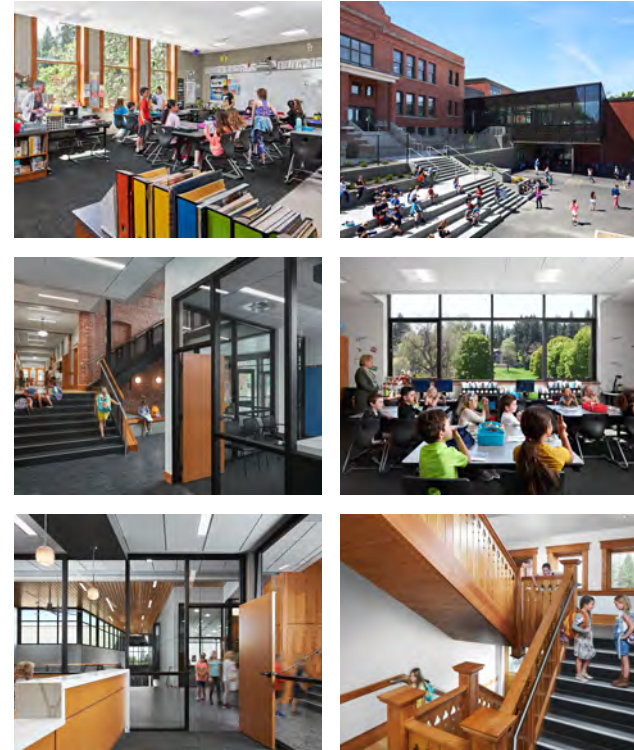
Ken Murphy, PRINCIPAL
kmurphy@alscarchitects.com
509.838.8568

Elementary Schools & Early Learning Centers





Franklin Elementary School
SPOKANE PUBLIC SCHOOLS | SPOKANE, WA



For over 100 years, Spokane's Franklin Elementary School has played a huge part in the surrounding area. Not only has Franklin provided an excellent education to tens of thousands of students, but it has also brought this neighborhood together.

Originally constructed in 1909 with several subsequent additions, Franklin Elementary School required significant updates to function as a modern elementary school.





Opportunity Elementary School

CENTRAL VALLEY SCHOOL DISTRICT | SPOKANE VALLEY, WA



The modernization and expansion of Opportunity Elementary School was designed to improve student safety, as well as meet Central Valley School District's current educational goals and objectives.

The project includes a complete modernization of the existing 1968 vintage, 42,000 square foot building. A 31,000 square foot addition was also constructed, providing a new gymnasium, additional classroom space, and a new community art room.

The project was phased, allowing students to remain in the building throughout the construction period.



Sunrise Elementary School

CENTRAL VALLEY SCHOOL DISTRICT | SPOKANE VALLEY, WA



This project involved an expansion and modernization of Sunrise Elementary School. The scope of work includes expanding the school from 51,000 to 74,000 square feet. The existing building was extensively remodeled, and new construction includes a multi-purpose room, art/community room and additional classrooms.

Students were relocated to an alternate location within the District for the duration of construction, allowing work to occur without phasing.



Creekside Elementary School

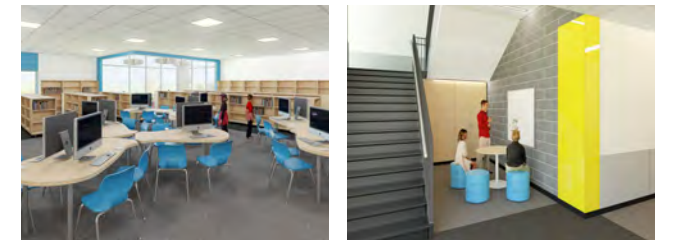
MEAD SCHOOL DISTRICT | MEAD, WA



Located on an 11.4 acre site, this new 66,000 square foot Elementary School will accommodate 600 students. The building is designed to reflect the values of the District as well as the character of the neighborhood. The use of brick and glass provide a timeless character and emphasize the school's importance as a civic and public building for the community.

The administration area is located adjacent to the main entry and is configured to provide optimum site visibility and security at the entry. Common use spaces are arranged directly off of the spine with Administration, Music, Multi-purpose and Gymnasium on the first floor and Library on the second

The site has been designed with student safety in mind, providing separation between the bus and parent drop-off areas.





Amistad Elementary School

KENNEWICK SCHOOL DISTRICT | KENNEWICK, WA



The new Amistad Elementary is designed to embrace the surrounding areas by reaching out across the site to connect the civic environment at the southeast with the residential neighborhood to the northwest. To juxtapose the existing Amistad Elementary, the new design features a central public zone and 'mixing chamber'. This allows maximum daylight and views to all learning spaces, along with creating outdoor environments that are inviting, safe and secure.

The building is designed to improve the arrival experience for vehicles, buses, and pedestrians. A well-defined pedestrian corridor has been created by relocating the existing parent drop off. The scale of a 2-story building is brought down at the entry with the single story administration and library, greeting those that arrive. Learning is brought into the 21st century by creating opportunities to teach outside of the classroom including features such as a learning stair at the entry, indoor small group instruction and outdoor learning environments.



Naches Pre K-4 School

NACHES VALLEY SCHOOL DISTRICT | NACHES, WA



Naches Valley School District represents the communities of Naches, Glead and the surrounding Naches Valley. This is a close knit community that values the natural surroundings and agricultural aspects of the area. By living within their means and approaching issues with an eye toward practicality, long term decisions are valued over frequently changing trends.

This is reflected in the design of the new Naches Valley Elementary School in the following ways:

- > Create a homey feel, yet maintain safety
- > Foster community use and involvement
- > Use of traditional, local, low maintenance materials
- > Responsible use of public funds
- > Clear circulation, simple building layout
- > Designed for future flexibility
- > Durable and energy efficient



Jim Darcy Elementary School

HELENA PUBLIC SCHOOLS | HELENA, MT



The new Jim Darcy Elementary School is being designed to accommodate 500 students. The new building will be located on the northwestern edge of the site, which will allow the existing school to remain occupied during construction. The school will feature grade level classroom pods with breakout spaces, a full size gymnasium, multi-purpose room, special services support, library and computer room.

The use of masonry, metal and glass provide a timeless character and emphasize its importance as a civic and public building for the community. The site has been organized to focus on student safety by providing separation between bus and parent drop-off areas.

An Outdoor Commons area with outdoor seating and views of the surrounding green space is located adjacent to the multi-purpose room. Outdoor learning decks are provided for each classroom pod in the space between the pods, providing a quiet and more focused space for learning.



Mullan Road Elementary School

SPOKANE PUBLIC SCHOOLS | SPOKANE, WA



The renovated and expanded Mullan Road Elementary was designed to be a neighborhood school tied to its residential context while expressing a sense of permanence and its importance as a place of learning. The exterior of the existing school was remodeled in response to its park-like setting.

The building's form and organization were designed to enhance opportunities for formal and informal learning by providing a safe, flexible, durable and inspiring educational environment.

The project included demolition of an older portion of the school. The project included constructing about 17,000 square feet of new space as well as renovating an addition constructed in 1981. An older portion of the school was demolished. In total, the school gained three additional classrooms, for a total of 25 classrooms to serve between 550 and 580 students.



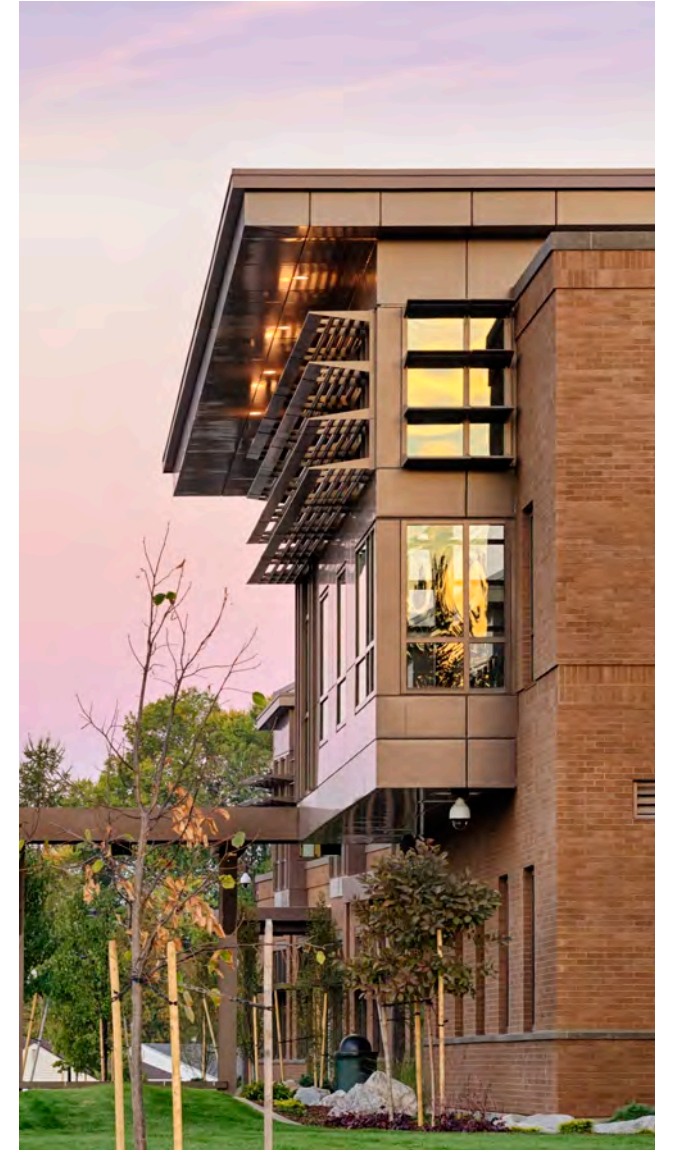
Westview Elementary School

SPOKANE PUBLIC SCHOOLS | SPOKANE, WA



This new 58,500 square foot elementary school was designed to replace an existing school in a residential neighborhood. The use of brick, window forms, accents of metal and glass provide a timeless character and emphasize its importance as a civic and public building for the community. The exterior and interior character relate to its park-like setting with the use of natural colors and materials. The buildings' form and organization enhance opportunities for formal and informal learning by providing a safe, flexible, durable and inspiring educational environment.

The school was designed with environmentally sustainable measures to meet the Washington Sustainable Schools Protocol (WSSP) or LEED for Schools. This will benefit the School District by lowering energy and maintenance costs, providing a teaching tool for the students and creating a healthy educational environment.





Lakeside Elementary School

PLUMMER-WORLEY SCHOOL DISTRICT | PLUMMER, ID



This new \$8.9 million elementary school was designed to replace a former elementary school that had been condemned.

The 46,900 square foot building is organized into three main components: Administration/Library, Gymnasium/Multi-Purpose Room and Classrooms.

The school entry connects the Administration/Library area to the two-story Classroom wing. This orientation allows space on the front of the school for the younger student's playground and responds to site contours; thereby reducing the amount of earthwork required.

An event entry connects the Classroom wing to the Gymnasium/Multipurpose component. This component is located on the west end of the building so there is easy access to parking for after-hours events and activities and to provide service access to the kitchen without crossing student circulation between the building and outdoor play areas.



Freeman Elementary School
FREEMAN SCHOOL DISTRICT | ROCKFORD, WA



This project involved an expansion and modernization of the existing Freeman Elementary School. The scope of work included expanding the school from 32,000 to 45,000 square feet. New construction includes a cafeteria/multi-purpose space and additional classrooms.

A combination of phased construction and housing elementary students in portable classrooms allowed for construction to occur in a most cost-effective manner.





Grant Elementary School

EASTMONT SCHOOL DISTRICT | EAST WENATCHEE, WA



The original Grant Elementary School was built in 1953. The entire facility was in need of modernization to meet current education goals and objectives and to extend the useful life of this school.

The design developed by ALSC includes a complete modernization of the existing 41,014 square foot school and an addition of approximately 8,650 square feet. The addition includes a cafeteria/multi-purpose room, kitchen, music room and four new classrooms. The addition also provides the necessary space to relocate educational programs currently housed in portables.





Ridgeview Elementary School

SPOKANE PUBLIC SCHOOLS | SPOKANE, WA



This new elementary school was designed to replace a sprawling 1950's school facility. Located on a very small site (less than 4 acres) in Northwest Spokane, the new two-story school is a highly efficient, unified, compact facility to house grades K-6.

The school has been designed to be open and inviting; promoting collaboration and encouraging interaction among students and staff. The design incorporates sustainable features such as daylighting, solar control and the use of materials from sustainable resources.

A key challenge was to design the exterior of the new school so it would relate and respect the adjacent single story homes. The design utilizes common masonry materials, forms and scale-reducing elements such as sunscreens and canopies to help blend the "new Ridgeview" in with its neighborhood.

Middle/Jr. High Schools

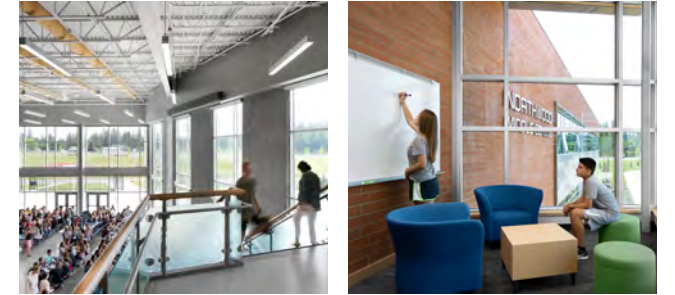


- Don't Get In A Bind -
RETURN YOUR LIBRARY MATERIALS ON TIME



Northwood Middle School

MEAD SCHOOL DISTRICT | MEAD, WA



The design of the replacement Northwood Middle School focused on creating a school that nurtures student engagement and encourages collaboration and community involvement.

The building is organized to provide enhanced opportunities for formal and informal learning within a safe, flexible, simple, functional, durable and inspiring educational environment.

The existing main gym, auxiliary gym, and choir and band rooms will remain with the new construction. Site work is currently underway on the new 115,000 square foot school, with building construction beginning in the summer of 2016 and completion scheduled for summer of 2018.



Highland Middle School

MEAD SCHOOL DISTRICT | MEAD, WA



The design of this new 120,000 square foot middle school for Mead School District will provide educational parity with the newly completed Northwood Middle School and respond to the unique neighborhood and site influences of the Five Mile Prairie. The school is divided into smaller learning communities for each grade in order to improve safety and create a sense of community. The District intends to move 6th grade students from elementary schools into middle schools upon completion of this project. The building's layout addresses concerns the District has heard from parents related to moving younger students into a middle school setting.

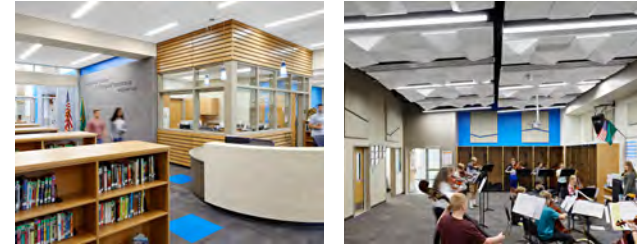
Master planning for the 65 acre site included studying how the entire site could meet future District needs including a potential location for a new elementary school and additional athletic facilities.





Evergreen Middle School

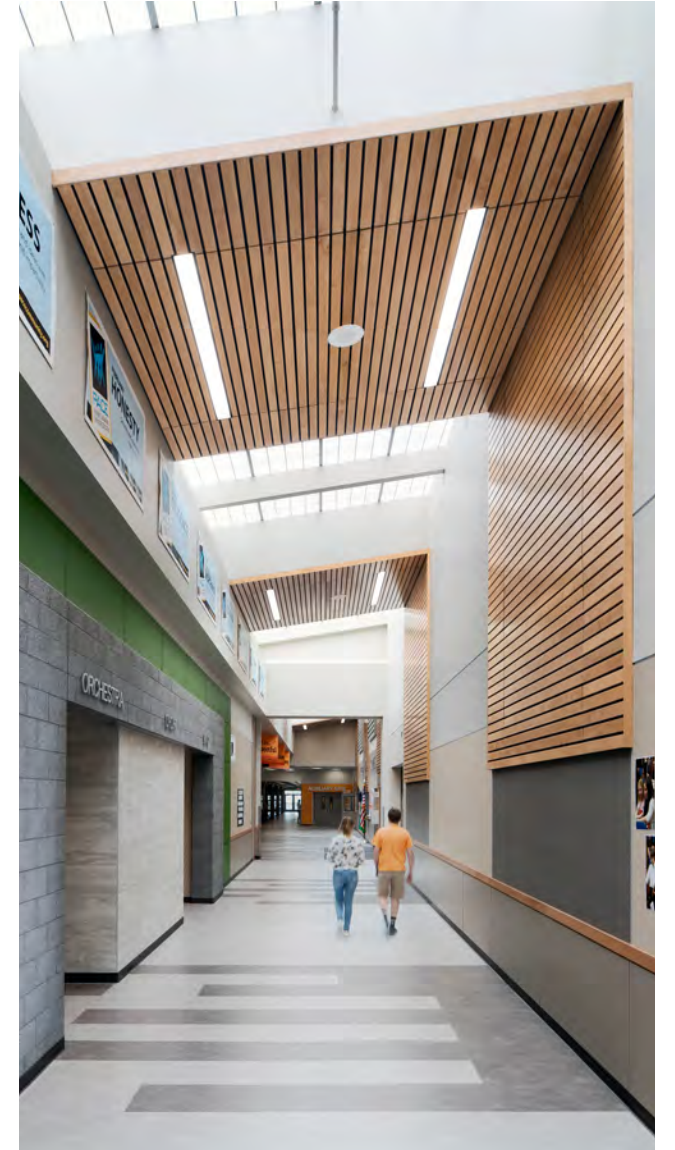
CENTRAL VALLEY SCHOOL DISTRICT | SPOKANE VALLEY, WA



This project involves partial demolition and complete modernization of the existing 72,570 square foot Evergreen Middle School.

26,000 square feet of new space will be added including new classrooms, restrooms, kitchen and expanded multi-purpose room.

Evergreen is being designed to increase student engagement and encourages active participation. The building's form and organization will enhance opportunities for formal and informal learning by providing a safe, flexible, simple, functional, durable and inspiring educational environment.





North Pines Middle School

CENTRAL VALLEY SCHOOL DISTRICT | SPOKANE VALLEY, WA



The scope of this project involves the design of a replacement Middle School, demolition of the existing school and reconfiguration of the site to address parking, vehicular movement and outdoor field needs.

The 84,600 sf school is designed to reflect the values of the District and the character of the neighborhood. CMU, metal and glass provide a timeless character and emphasize the school's importance as a civic and public building for the community. Construction is being completed on an occupied campus.





Selkirk Middle School

CENTRAL VALLEY SCHOOL DISTRICT | SPOKANE VALLEY, WA



This new 85,800 SF Middle School involved site adaptation of ALSC's design for the replacement of North Pines Middle School in order to meet a growing enrollment need in Central Valley School District. This approach reduced the design schedule by nearly 60%, saving five months of design time and allowing the project to be bid during a more advantageous time of year.

During this streamlined process, lessons learned during North Pines Middle School's construction were closely monitored and incorporated into the final construction documents for the new Selkirk Middle School.



Sterling Middle School

EASTMONT SCHOOL DISTRICT | EAST WENATCHEE, WA



This project reorganized an existing school into distinct wings for 5th, 6th and 7th grade. A new central heart of the school was created that includes the student commons, library, computer labs, lockers and project/art rooms. 57,000 square feet of the existing 77,000 square foot school was modernized and the remainder of the building (20,000 square feet) was demolished and rebuilt in a different location to complete the reorganization. The project also included 15,000 square feet of new space to accommodate current and future needs.

The site was reorganized to provide a separate bus drop off area from the parent drop off to improve student safety and traffic congestion. An exterior student gathering area and playfields were relocated to improve visual connection between the student commons for ease of supervision.

Construction was completed in multiple phases on an occupied campus.



Washington Middle School

MISSOULA COUNTY PUBLIC SCHOOLS | MISSOULA, MT



This project involves a major renovation and construction of a 20,000 sf addition, resulting in a 92,000 sf facility to house 720 students. The building is organized to support “a school within a school” concept. General classrooms are separated from the more public spaces - gymnasiums, multi-purpose room, administration and music classrooms.

The library is located at the heart of the school, emphasizing the importance of knowledge and research as well as providing a central location for students and staff access. Administration spaces are relocated to improve site visibility and security; providing a single entry for all visitors.

The site is reorganized to improve student safety by providing separation between bus drop-off, parent drop-off, and parking. Construction will be completed in multiple phases on an occupied campus.



Greenacres Middle School

CENTRAL VALLEY SCHOOL DISTRICT | SPOKANE VALLEY, WA



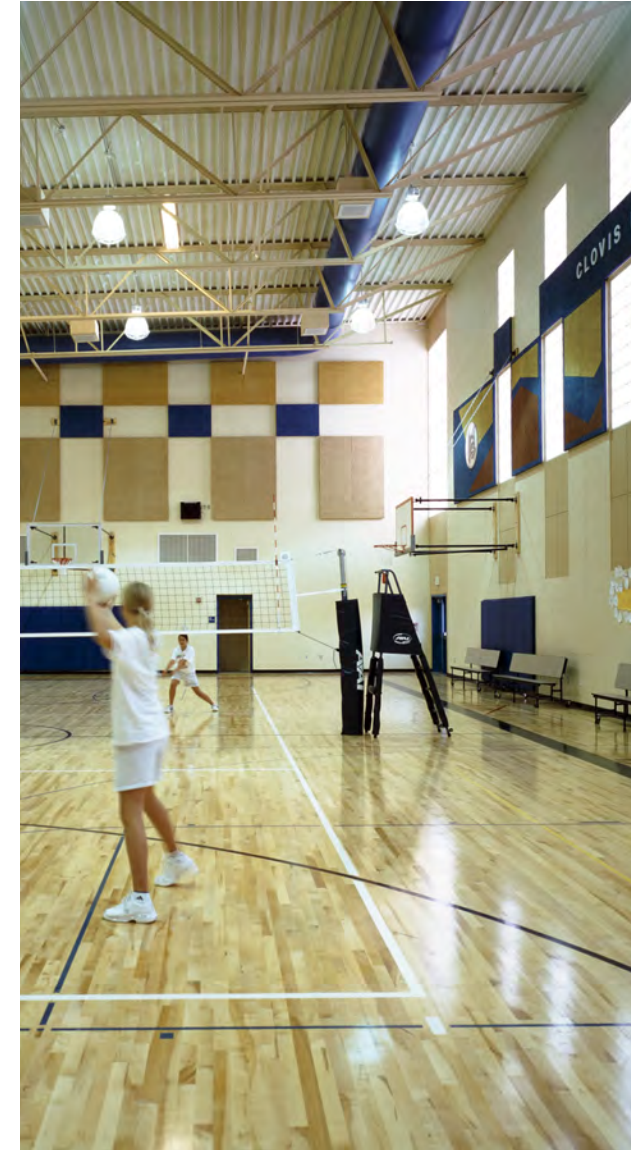
A key element of work for this 90,722 square foot addition and modernization involved revising the site to accommodate a separate parent drop-off zone from bus traffic and providing a new exterior student area south of the building.

A new student commons was constructed adjacent to student arrival points, allowing for secure monitoring by administration staff. Stucco and glass are used to emphasize the entrance and to provide a new identity for the school. The lobby provides for controlled access during the day and a separate public entry for after-hours events in the gymnasium.





Clovis Point Middle School
EASTMONT SCHOOL DISTRICT | EAST WENATCHEE, WA



This new 84,000 square foot school was designed to serve 600 students in grades 6 and 7. With the potential for the future inclusion of 5th grade students, "core" classrooms were equipped and grouped to support a "3 sections per grade" configuration. Each classroom grouping focuses on a common multi-use space for large group and project based activities.

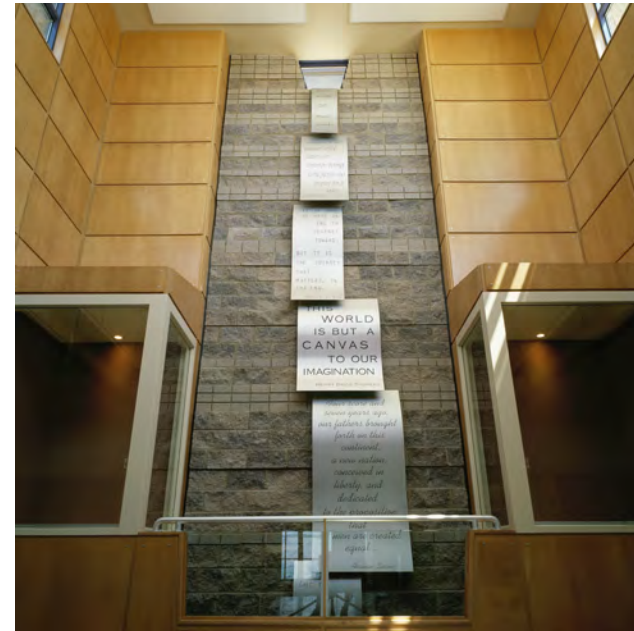
The library and student commons are building focal points and are positioned near main entry points for easy access, supervision and segregation of non-community areas during after hours use.

The main office area is central to all areas of the building and site. This strategic placement of the office allows all movement within the building and site to be easily monitored.



Eastmont Junior High School

EASTMONT SCHOOL DISTRICT | EAST WENATCHEE, WA



In planning for this new junior high school, ALSC's team was challenged by the School District to design a school that was student centered and responded to its unique location in the East Wenatchee Valley. The 38-acre site offered wonderful opportunities including a 100' slope towards the Columbia River and magnificent views of the mountains to the west.

Massing and organizational concepts were designed to reduce the scale of the 150,000 square foot school and relate to the Valley's basalt cliffs. The plan features a main corridor that parallels and bends with the site contours. Radiating from the spine are three two-story learning community wings. The school is built into a hillside, with the student entrance and commons space extending from the central spine on the lower level and the public entrance on the upper level.

A "River of Natural Light" splits the exterior facade and provides natural light into the heart of the building. Curved metal panels that contain quotes with an education theme cascade down the masonry at several locations.

High Schools





Cheney High School

CHENEY SCHOOL DISTRICT | CHENEY, WA



This \$25.5 million addition and modernization to Cheney High School is currently under construction. 66,000 square feet of new construction is being planned to include an auxiliary gym with bleacher seating for 150, band/choir, weights and fitness, administration and several classrooms. An expanded student commons and new kitchen will provide adequate space to serve breakfast and lunch and provide a multi-functional space. A new Performing Arts Center will include a 500 seat theater and stage along with dressing rooms, scene shop, storage, and "black box" greenroom classroom.

27,200 square feet of existing vocational education space is being modernized including metal shop, wood/industrial shop, drafting, engineering, floral classrooms and greenhouse.

The Administration suite is being relocated to provide a secure entry for visitors to be routed through before entering the school. The relocation also provides for improved visual supervision.





Ridgeline High School

CENTRAL VALLEY SCHOOL DISTRICT | SPOKANE VALLEY, WA



This new 240,000 sf High School will provide a third comprehensive high school for Central Valley School District when completed in 2021.

The school includes 28 general classrooms, science rooms, performing arts theater and library. In addition, Career & Technical Education (CTE) specialized spaces are provided including project rooms, makerspaces and Family Consumer Science Center to house a culinary program.

The new gymnasiums are designed as multi-use spaces to serve health and fitness classes, athletics, community events, school presentations, and act as a meeting area for the entire school. Their design incorporates current use requirements (seating, acoustics, lighting, area, technology, and clear height), and are scaled to host district, regional and State team and performance group events.



Eastmont High School

EASTMONT SCHOOL DISTRICT | EAST WENATCHEE, WA



This project involved fully modernizing the existing 168,500 square foot school and construction of a 32,000 square foot addition. Construction was completed in multiple phases on an occupied campus.

The School District's vision was to transform their existing high school into a facility that meets current educational needs and provides flexibility to accommodate future needs. ALSC collaborated with District staff, School Board and Superintendent to address several goals including:

- > Improve student flow and safety.
- > Provide value for the community.
- > Create state-of-the-art educational environment.
- > Provide a durable, easy to maintain facility.
- > Create a sense of place that inspires students.
- > Zone the school to accommodate community use.





Liberty High School

LIBERTY SCHOOL DISTRICT | SPANGLE, WA



Liberty High School was constructed in 1960, with an addition constructed in 1998. The District's desire was to create a solution that seamlessly combined three vintages of construction into one holistic school for academic, athletic and community use and represents a great value to taxpayers.

The project is being designed so construction will occur in multiple phases; allowing continued use of the site and portions of the building by the District. This approach to phasing is focused on maintaining an adequate educational environment and safety, while ensuring that construction is efficient and cost effective.





Freeman High School

FREEMAN SCHOOL DISTRICT | ROCKFORD, WA



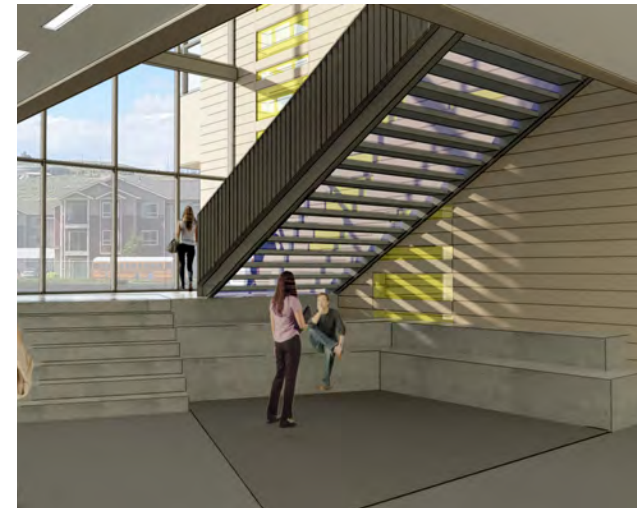
The scope of this project included fully renovating the existing Freeman High School and expanding its size from 60,000 to 80,000 square feet.

New construction includes a multi-purpose room and kitchen facility to be used as cafeteria, commons and performing arts space and a new main gym with expanded seating capacity and handicap accessible bleachers.



Southridge High School

KENNEWICK SCHOOL DISTRICT | KENNEWICK, WA



Two goals for Southridge High School are to unite the three classroom wings and to move the bus drop-off to the west side of the school.

The original design of Southridge was to create three distinct learning communities, scaling down the student experience. The objective has now changed to create distinctive departments and have students use the entire school. The addition links the original wings while creating a defined science department.

By moving buses to the back of the school, a third of the student population is now entering and exiting the building from the northwest. The new central entry and stair gathers not only the bus riders, but also the existing student parking lot in a central point for quick distribution into the school.

Sports Facilities



102

HONOR GARDEN

PERFORMING ARTS CENTER

PERFORMING ARTS CENTER

FAST SPIRIT



High School Stadium Complex

MEAD SCHOOL DISTRICT | MEAD, WA

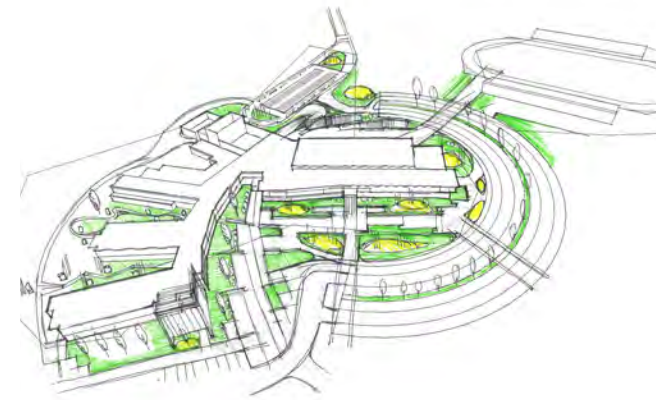


This new 4,500 seat outdoor stadium will serve as the location for Mt. Spokane and Mead High School home football games and soccer matches. The stadium will also provide the District's award-winning marching band programs with performance and practice facilities.

Several factors contribute to the overall orientation of the buildings, stadium, and site parking. The guiding influence of the location and orientation of parking is to utilize the existing parking area to the maximum extent possible. The parking will accommodate efficient and clearly understood access to and from the site for large performing arts, community and athletic events.

Influences guiding the location and orientation of the stadium and performance field are solar orientation, access from parking, pedestrian circulation, and accommodating the 17' vertical difference in topography between the existing buildings and the sports field level.





Ridgeline Athletic Facilities

CENTRAL VALLEY SCHOOL DISTRICT | SPOKANE VALLEY, WA

To support the new 240,000 square foot Ridgeline High School, a new 2,500 seat outdoor stadium is provided to house football games, soccer matches and track meets. Twelve tennis courts are included, along with baseball, softball and miscellaneous practice fields that are also used by the marching band for practice and competition.

The stadium includes lighting for night games. Parking is provided at the nearby high school parking lots. Concessions and restrooms are located at the stadium, and team locker rooms are provided within the high school gymnasium area.

The stadium and sports fields are sited to be isolated as much as possible from the surrounding neighborhood; minimizing any disruption related to lighting and noise.



Joe Albi Stadium

SPOKANE PUBLIC SCHOOLS | SPOKANE, WA



ALSC was hired by Spokane Public Schools to complete a formal study of Albi Stadium to determine the best possible options for the stadium, develop the scope of these options and related costs (both capital improvements and operational costs).

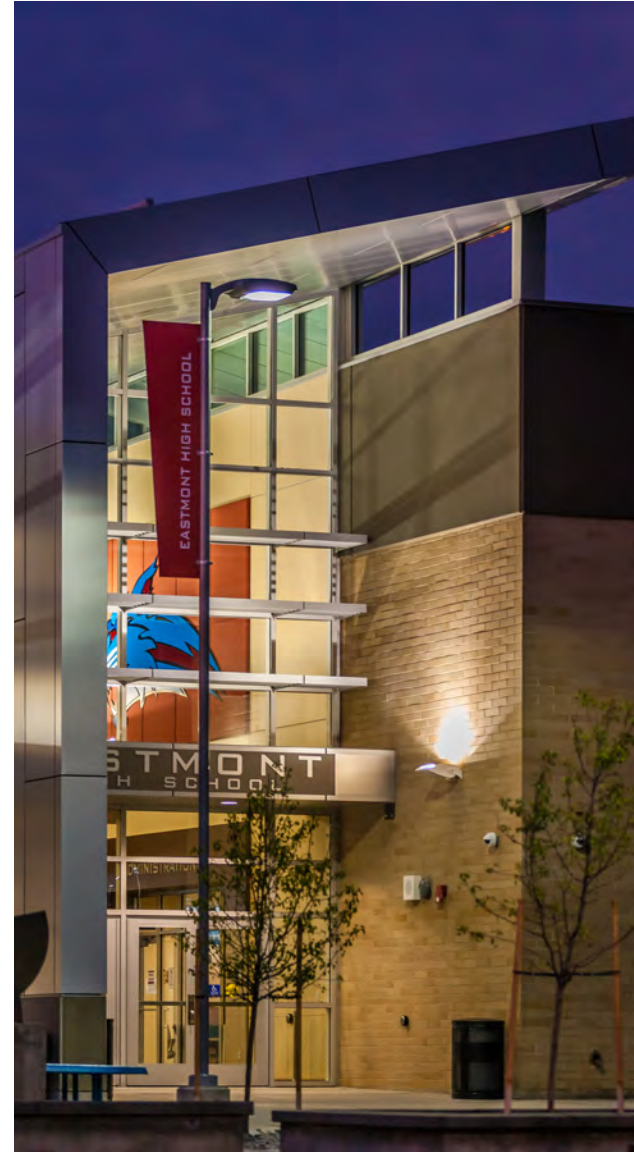
Options explored ranged from minimal upgrades to Albi's deficiencies to modifications that would make this large venue a more intimate spectator experience for high school sports to replacement, on-site or off-site. The study identified and analyzed alternative improvement approaches with a broad range of possibilities, concentrating on cost of annual operations, practicality and cost to renovate the existing facility, practicality and cost to replace the facility on its current site, and practicality and cost to replace the facility on a new site.





Eastmont High School Athletic Field Improvements

EASTMONT SCHOOL DISTRICT | EAST WENATCHEE, WA



As part of this \$32 million remodel and expansion project, the athletic facilities at Eastmont High School were also given new life. The existing track was nearing the end of its useful life, so it was resurfaced and drainage was added around the track. A new pole vault area, long jump pits and high jump area, new sound system were also provided.

Also included in the project was a remodel of concessions to serve the outdoor facilities. This included waterproofing the concessions and storage area roof. Bleachers were repaired and restrooms at the football stadium were remodeled.

Transportation & Maintenance





Transportation Facility

MEAD SCHOOL DISTRICT | MEAD, WA



This new District Transportation Facility includes a 23,500 square foot building, along with an additional 25,000 square feet of outdoor covered area.

The shop services area includes maintenance bays (8 bus, 2 vehicle), fabrication area, shop foreman office, fluids room, parts room, tools room, toilet/locker facilities, break room, interior wash bay, exterior rinse area, exterior tire storage. Driver Support space including training office, restrooms, storage room and work area. Administrative offices including reception/waiting area, offices, work room, storage room and training conference room.

Bus fleet parking for the facility is located to the south of the building, with employee parking to the west. The bus fleet will be partially covered by canopies to protect them from inclement weather and provide electrical connection for engine block heaters.

The current Transportation Facility will remain in operation during construction of new facility. After completion, staff will move into the new facility while construction occurs on the new Athletic and Performing Arts Complex.



Maintenance Facility

MEAD SCHOOL DISTRICT | MEAD, WA



Mead School District's new Maintenance Facility includes a 15,380 square foot shop building along with 3,000 square feet of outdoor covered area.

Within the building, specialty shops are provided for carpentry, lock, paint, welding, electrical, HVAC, and grounds. The administration area includes open office space, Director's office, conference room and break room. A training classroom and shop offices are included, along with storage, toilet rooms and lockers.



Transportation Cooperative

VALLEY SCHOOL DISTRICT | VALLEY, WA



Located on a 10 acre wooded site, this new facility was designed to take advantage of its highly visible location from nearby Highway 395.

It includes four vehicle maintenance bays with related shop support areas, offices for the head of the maintenance department and the chief mechanic, a break room for bus drivers and a meeting room for staff and public use.



Palouse Regional Transportation Cooperative

FREEMAN SCHOOL DISTRICT | ROCKFORD, WA



Located on the Freeman school campus, the Palouse Region Transportation Cooperative includes a bus maintenance shop, training room, offices and covered bus parking for 22 buses. The vehicle maintenance building has two bus maintenance bays and one bus wash bay. The shop provides storage for parts and equipment with convenient covered access to both parking canopies for minor maintenance checks and driver access to buses

203 N. Washington, Ste. 400
Spokane, WA 99201
509.838.8568

alscarchitects.com

We bring our clients' **stories** to life.