

MEDICAL & HEALTHCARE

2019 ALSC Architects Brochure

ALSC

ARCHITECTS

ALSC Architects is a leader in planning and designing school facilities of lasting quality . . . schools with personalities reflective of their communities.

We believe each school should have a character unique to its neighborhood, community and mission. The approach we offer is highly interactive and encourages the involvement of your staff, students and the community.

Our experience in educational facility planning and design includes current projects for school districts including Kennewick, Central Valley, Mead, Cheney and Spokane Public Schools.

ALSC was founded in 1948. We are a firm with a long history and a bright future. We offer a combination of strong professional experience and a commitment to fresh, creative approaches for project planning and design.

From our staff of 45 architects, interior designers, cost estimators, construction administration specialists, administrative and technical personnel we have experienced personnel available for immediate assignment to new projects.





We bring our clients' stories to life.™



DESIGN PHILOSOPHY

ALSC's design philosophy is a reflection of our core values as a professional design firm:

SUCCESS IS MEASURED ON YOUR TERMS: At ALSC, we create architecture that is an authentic expression of each school district, their staff, students and community.

COLLABORATION: We believe that the best solutions are generated from a collaborative process that engages and benefits from the collective talents and expertise of the entire team, including District representatives and community stakeholders.

CLEAR, OPEN COMMUNICATION: Our approach focuses on removing communication barriers and listening, watching and gathering information. Careful processing of that information leads to an understanding of the true essence of the project and the identification of Guiding Principles (goals, needs, priorities and vision). We will clearly document needs, goals and decisions so there is clarity among all team members regarding expectations.



87%
of our work is with
REPEAT CLIENTS

BUILDING CONSENSUS: Our process will build consensus among stakeholders as Guiding Principles are established for your project. The Guiding Principles will be the foundation of the design of your school. They will be used to evaluate all design options and decisions and will be the measuring stick for the final result.

LEADERSHIP: We will provide leadership and expertise to ensure that the design and construction of your projects exceed expectations and fulfill on commitments made to your staff, students and community.

Our approach has produced unique and imaginative architecture that is highly functional, cost effective and maintainable.

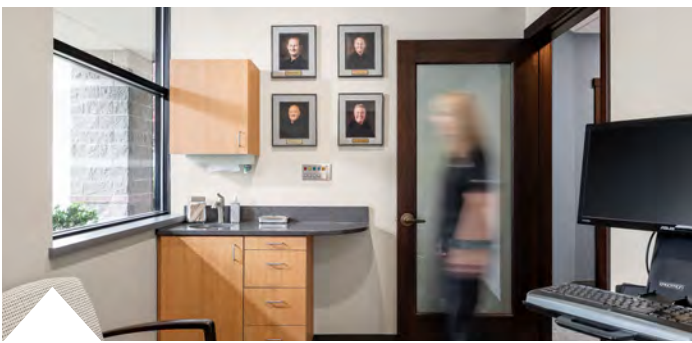




MEDICAL & HEALTHCARE PROJECTS

ALSC's background includes a variety of medical, dental, hospital and laboratory design projects. We are experienced at providing a full range of planning, design and construction administration services to design facilities that respond to the unique needs of each client and project.

CHAS SPOKANE VALLEY CLINIC



Oral Surgery Plus

SPOKANE, WA

This dramatic face lift that transformed a state-of-art oral surgery office features a modern flare to enhance the balance, comfort and function for patients. The scope of work included new construction, finishes, LED light fixtures and furnishings throughout the office.

The mission of Oral Surgery is to create a caring, nurturing environment where comfort and health is of primary importance. This was accomplished with a blend of pattern, structures and color. The inspirational material selection of stack stone at the reception desk and feature wall creates an expressive tone as patients are greeted.

A team-build project approach with a pre-selected contractor allowed for a seamless phased process which minimized the impact on the office schedule and their patients.



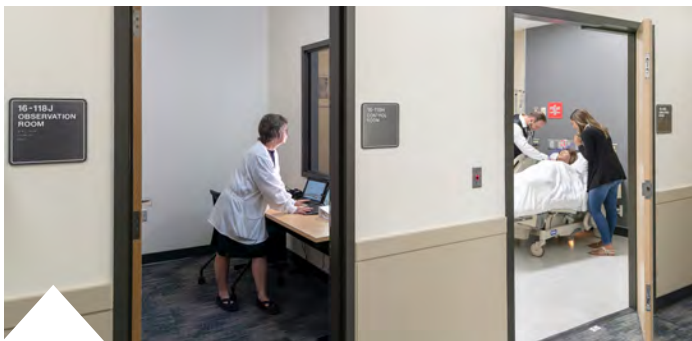
CHAS Spokane Valley Clinic

CHAS

SPOKANE VALLEY, WA

Originally located on the second floor of a 2-story building, CHAS recently expanded their Spokane Valley Clinic services to the first floor to provide additional services for patients. The 5,731 square foot interior remodel includes all new systems, materials and furnishings to provide cohesion between the first and second floor spaces. The newly remodeled area includes standard patient and staff areas as well as a new Didactic space for the Operational Residency Program.

As part of the scope of work, master programming and space planning was completed for the entire first floor, allowing for future expansion of the remaining 5,500 square feet of space.



Nursing Simulation Suite

SPOKANE COMMUNITY COLLEGE
SPOKANE, WA

1,400 square feet of existing space in SCC Building 16 was remodeled to house new nursing simulation suites and observation rooms. Manikins are used in the suites, which mimic hospital rooms. Each suite adjoins an observation room with one-way glass.

Students and instructors in the observation room can watch nursing students deal with a variety of simulations while controlling the manikin. Obstetric, pediatric and a variety of other medical and surgical simulations are part of the school's curriculum. The realistic simulation environment allows students to see things they may not see in the clinical environment.



Respiratory Care Expansion

SPOKANE COMMUNITY COLLEGE
SPOKANE, WA

Existing area within SCC Building 8 was remodeled to provide space for the Respiratory Care Program. Included are two simulation rooms, classroom and lab space, control room and storage.

Existing lab tables were modified to allow for reuse in the remodeled space, and medical gases were extended to the expanded area.



North Spokane Hospice House
 HOSPICE OF SPOKANE
 SPOKANE, WA

This new Hospice House is located just off Division Street in Northwest Spokane. The 13,000 square foot facility includes 12 private patient rooms was designed to be expanded by an additional eight rooms depending on need.

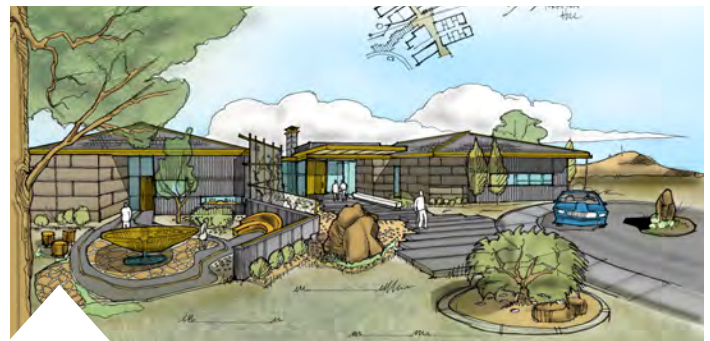
The North Side facility is similar in design to the 12-bed Hospice House on Spokane’s South Hill (also designed by ALSC), although common areas at the North Side facility are slightly larger to accommodate future expansion.

Hospice House
 HOSPICE OF SPOKANE
 SPOKANE, WA

This new facility was designed to provide palliative care for terminally ill patients. Located on Spokane’s lower South Hill, 12,000 square foot “Hospice House” was designed to appear homelike and fit into its residential neighborhood.

The House was designed as much for the needs of the patients, family and close friends as it was for the patients. The plan layout and interior design provide an environment where a patient or family member can immediately feel comfortable and at home. This is accomplished by room scale and warm interior finishes. Places for quiet contemplation and places for casual interaction are both provided.

The facility includes 12 private rooms arranged around an atrium which includes a dining room and central nursing station. Each room has its own patio, accessible for bedridden patients, and provides ample space for family members to have extended visits with the patient.



New Hospice House

PARTNERS IN CARE

BEND, OR

Partners in Care intends to build a new 12 bed Hospice House to replace the existing 6 bed facility. The new house will be designed to meet current regulations and new best practices for hospice facilities while allowing the existing building to be remodeled to meet growing administrative needs in the future.

The goal for this project is to create great lasting architecture that reflects the mission, values, and promises of Partners in Care. These will include not only the medical and physical side of hospice care, but also the emotional and spiritual needs as well.

Hospice House

CHAPLAINCY HEALTH CARE

RICHLAND, WA

The purpose of the study is to help determine the best course of action for providing long-term Hospice House services to the Tri-Cities community. Built in 1995 and expanded in 2001, the existing Hospice House is approaching 23 years of service to the community. Due to aging and increased regulatory requirements, the existing Hospice House will need to be repaired, significantly upgraded, or eventually replaced.

A Building Program was developed based on interviews with the Hospice House Study Work Group and the current Hospice House staff. Whether building new or remodeling, the information in the Building Program became the definition of the project scope for the upgrade and new options. Based upon the report, the Facilities Committee recommended to the Chaplaincy Health Care Board of Directors that they proceed with construction of a new hospice house.

ALSC is continuing to assist Chaplaincy with their capital campaign for a new hospice house.

SPOKANE

203 N. Washington
Ste. 400
Spokane, WA
99201
P 509.838.8568

COEUR D'ALENE

6500 Mineral Dr.
Ste. 101
Coeur d'Alene, ID
83815
P 208.676.8292

alscarchitects.com

We bring our clients' **stories** to life.