

Descriptive Data Sheet

PROJECT NAME

Northern Quest Resort
& Casino Expansion

PROJECT LOCATION

Airway Heights, Washington

Square Footage

56,000 SF

PROJECT SYNOPSIS

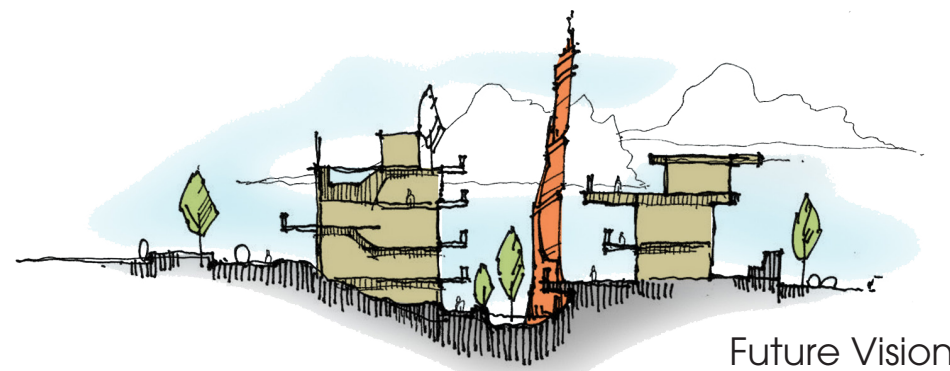
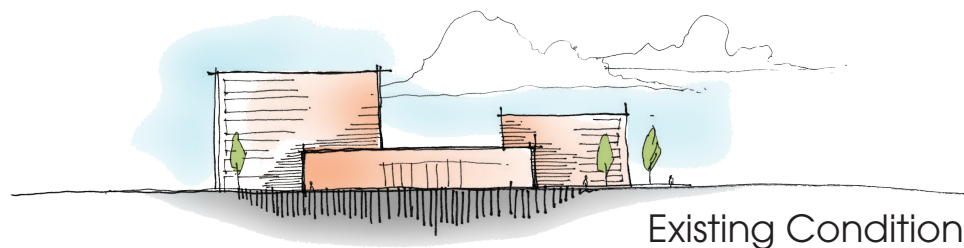
The Kalispel Tribe of Indians' (KTI) vision was to transform their 252-acre property, anchored by the Northern Quest Resort & Casino (NQRC), into a vibrant and dense urban environment that would attract visitors of all ages. Through a process of design charrettes, ideas undulated between large urban development and creating human scale objects and buildings.

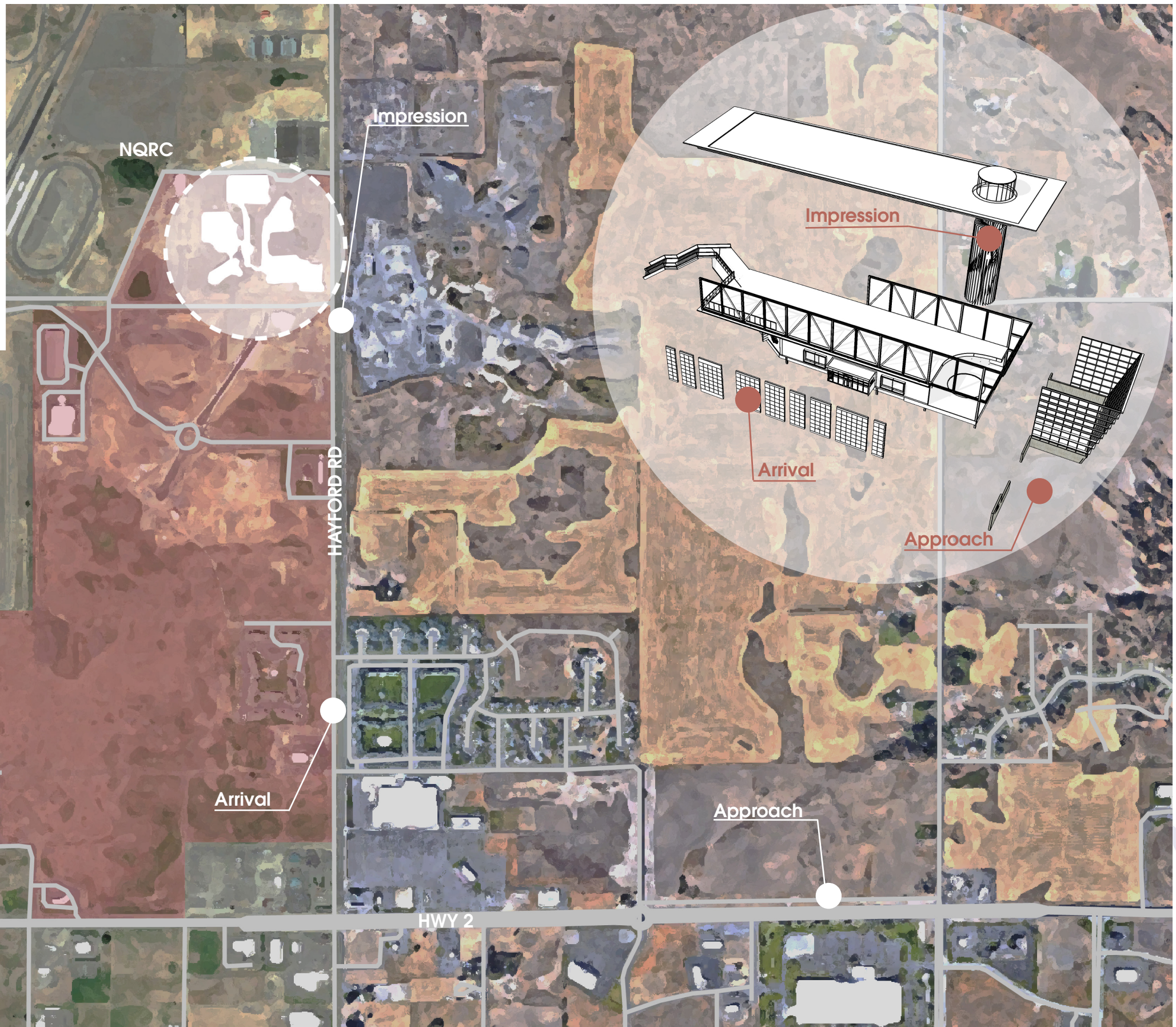
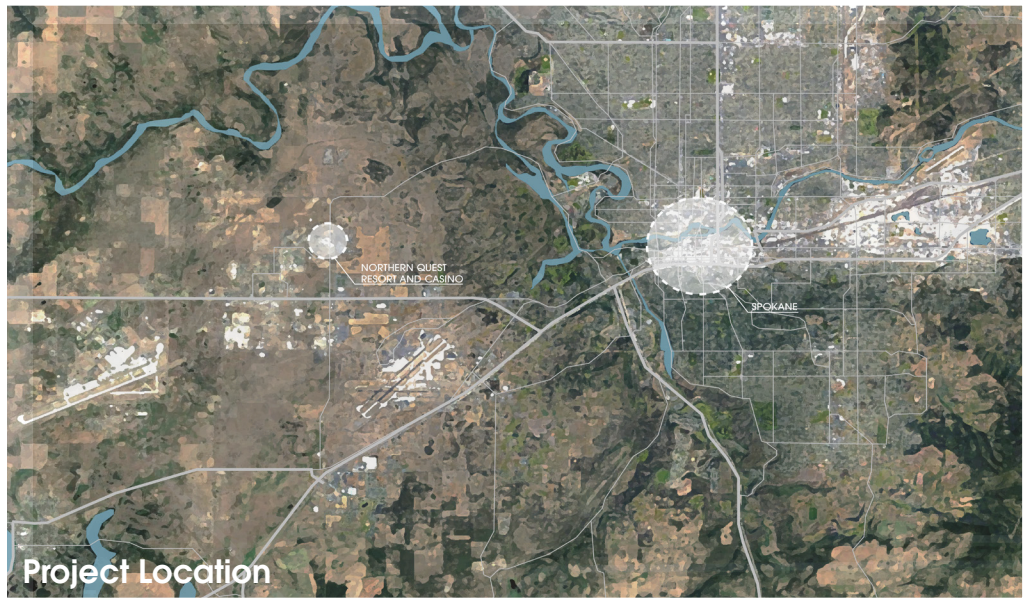
Subsequent goals were developed specifically to aid in the design of an iconic entry to the property:

- **Urban Village Catalyst:** Signal the arrival, creating an iconic entry and aid in wayfinding.
- **Sense of Place:** Create a neighborhood density of family-oriented features that support each independent function through interdependence.
- **Authentic Identity:** Design character and quality to be unique and historically grounded in the KTI's traditions and Tribal lands.

In response to the goal of creating a catalytic entry point, the 56,000 square foot addition was positioned at the 100% corner of the entry to the Village. With its 60' long cantilever protecting the entry, 150' long, 1-1/2 story tall digital story board and Beacon sculpture penetrating the roof plane, the building addition can be seen from miles away; yet the architecture feels both suited for the vastness of the resort and in harmony with the human scale of an urban village.

The design engages visitors easily as they flow into a centrally located eddy, sparking joy in its grandeur and aiding in selecting their next adventure. The authentic identity of the Kalispel Tribe is woven through the design both directly and abstractly, enriching the environment while not impeding the feel of a 21st century resort.





Design Connections

Designed to be experienced from several vantage points.



Future Vision of Northern Quest Drive



The Urban Catalyst
Signal of Arrival



The Arrival

The building facade strikes an abstract composition between storytelling and allowing interior vibrancy to engage the plaza.

Sense of Place

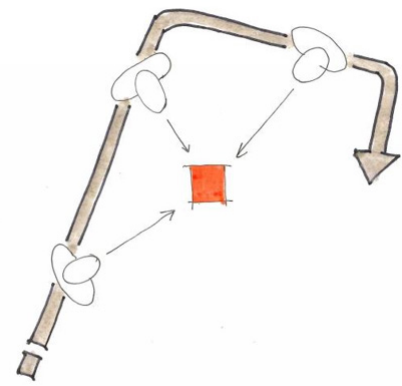
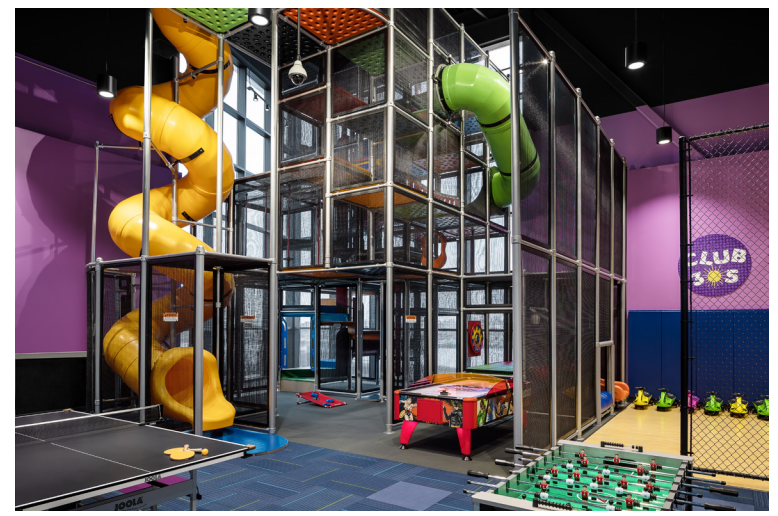
The tight grouping of a variety of venues helps create the flow and scale of a dense neighborhood.





The Eddy

Tribal lakes flow across the ceiling;
encouraging visitors to embark on their own journey.

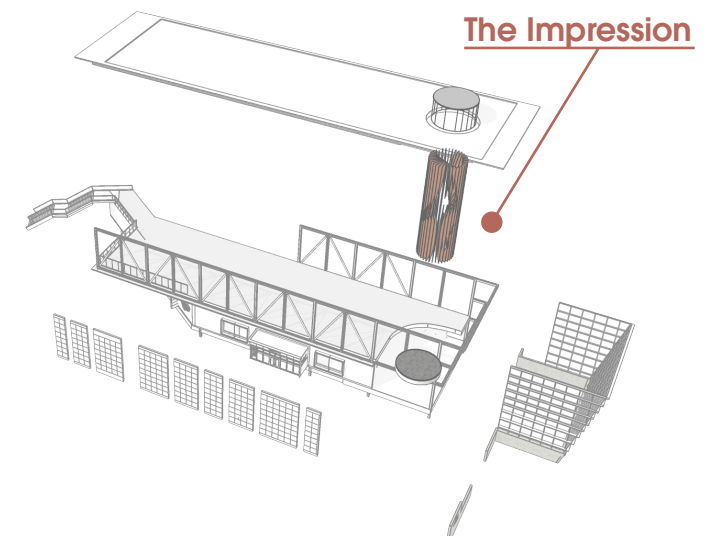
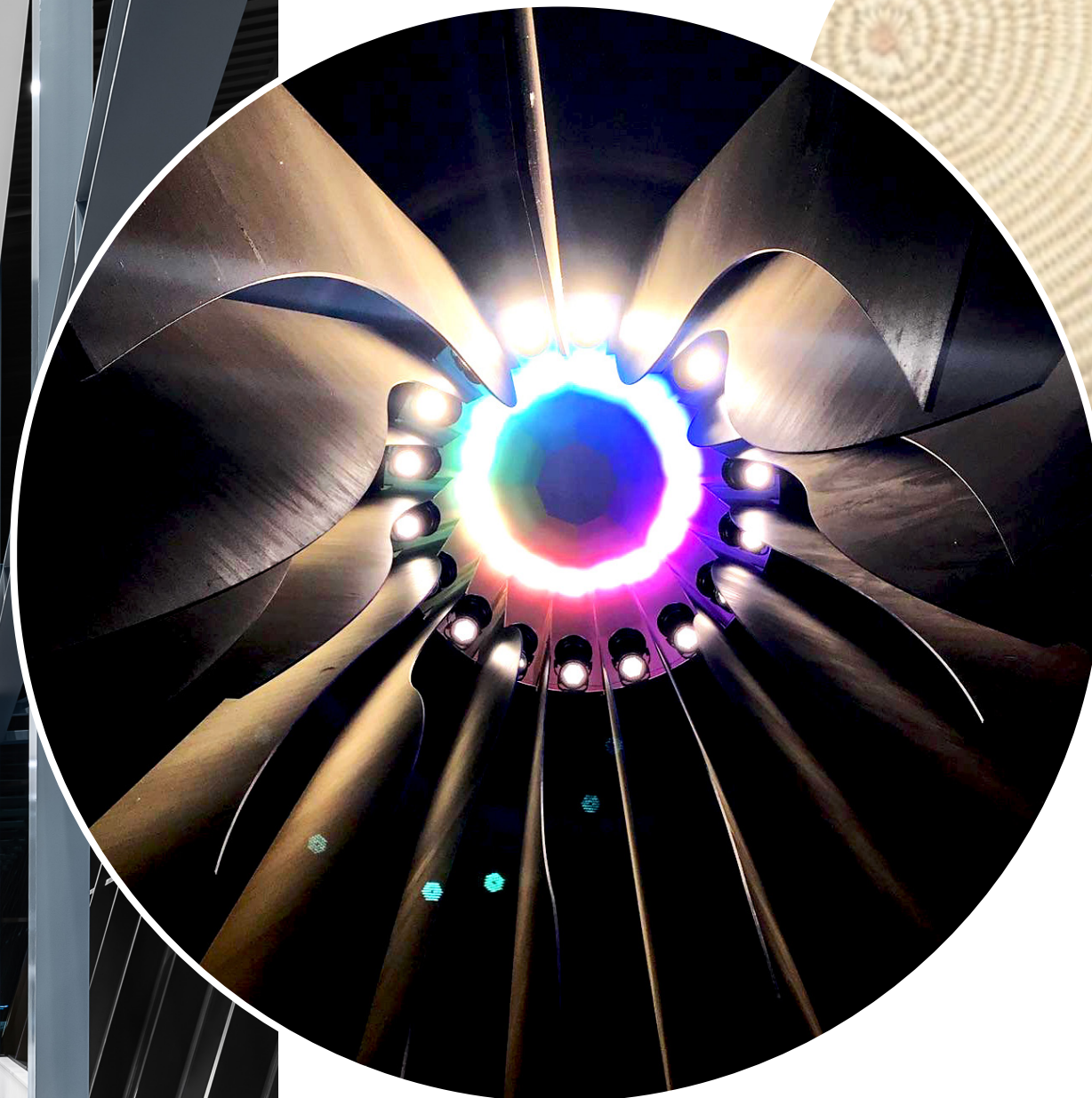


The Eddy
Provides a pause; a rendezvous point easily navigated to.



The Impression

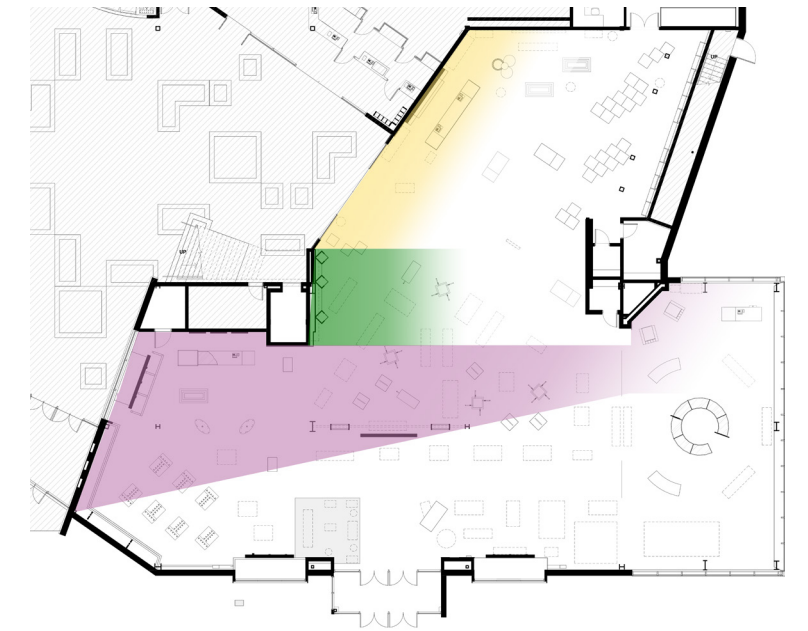
Organic interior edges soften the expression of the 56' high, 50,000 pound corten steel beacon.

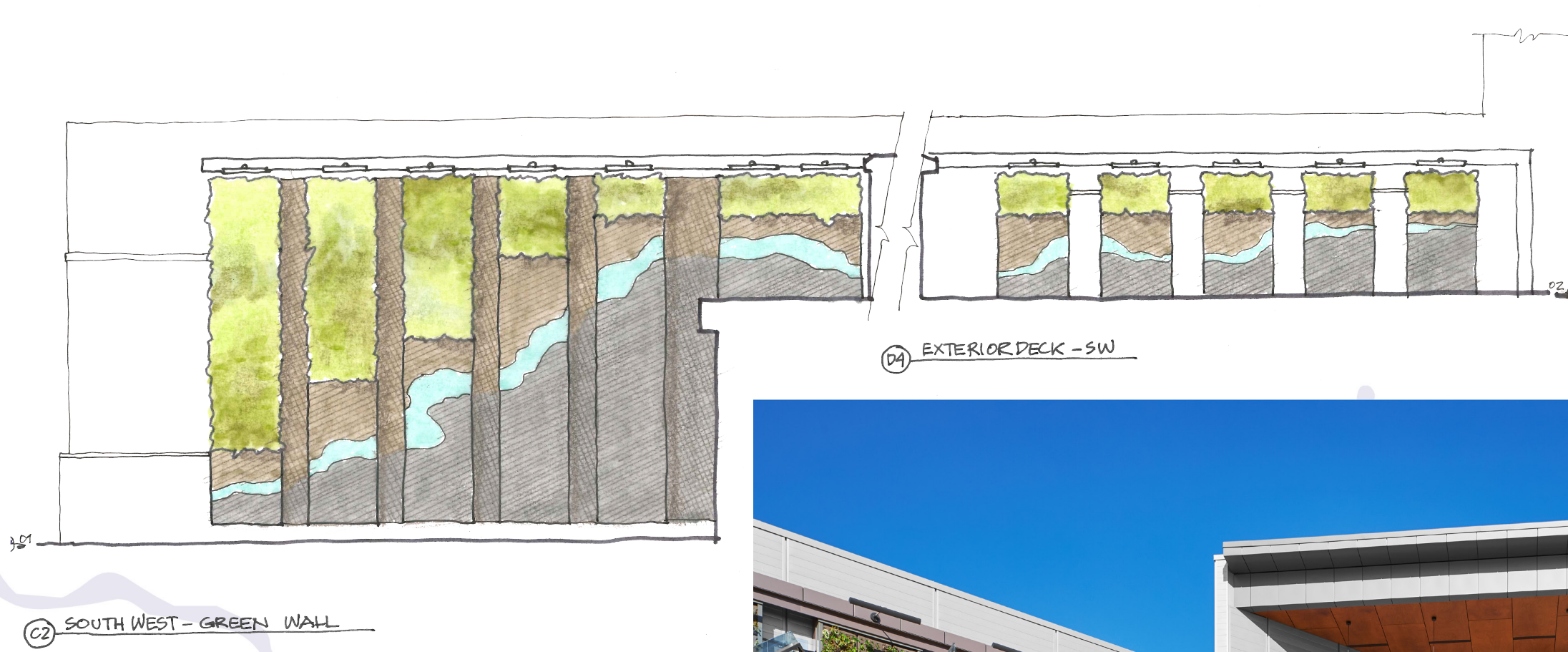




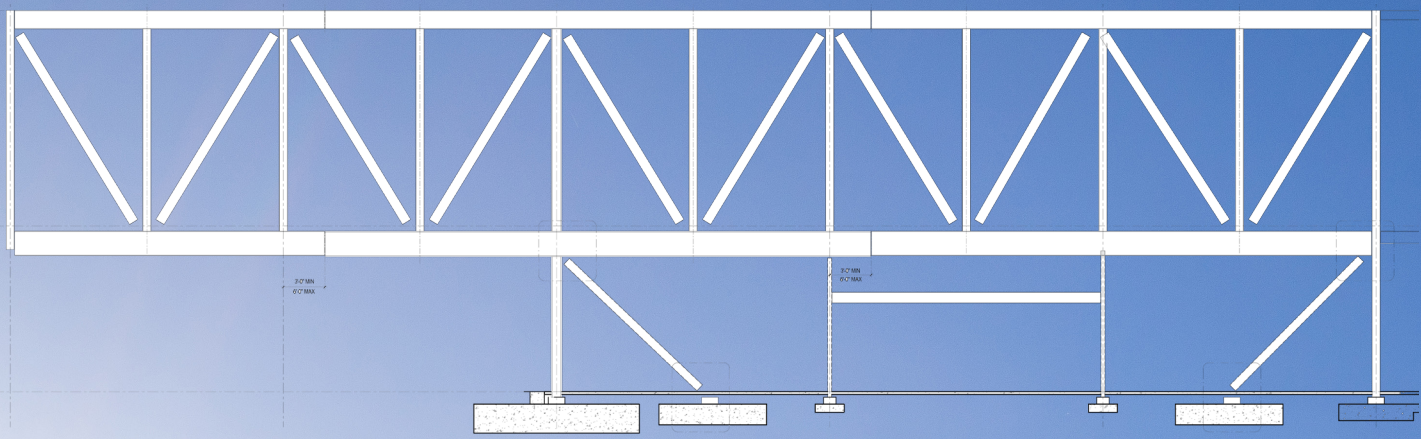
Authentic Identity

Featuring ties to sacred Tribal lands, the design creates an urban experience infused with the richness of history.





Cantilevered Entry & Garden Wall
 Creating Human-Scale Identities



Structural Expression of the Cantilever





Great Quest